

ADJACENT SIDEWALK

EXPANSION JOINT

CONCRETE CURB AND GUTTER  
PER LOCAL STANDARDS

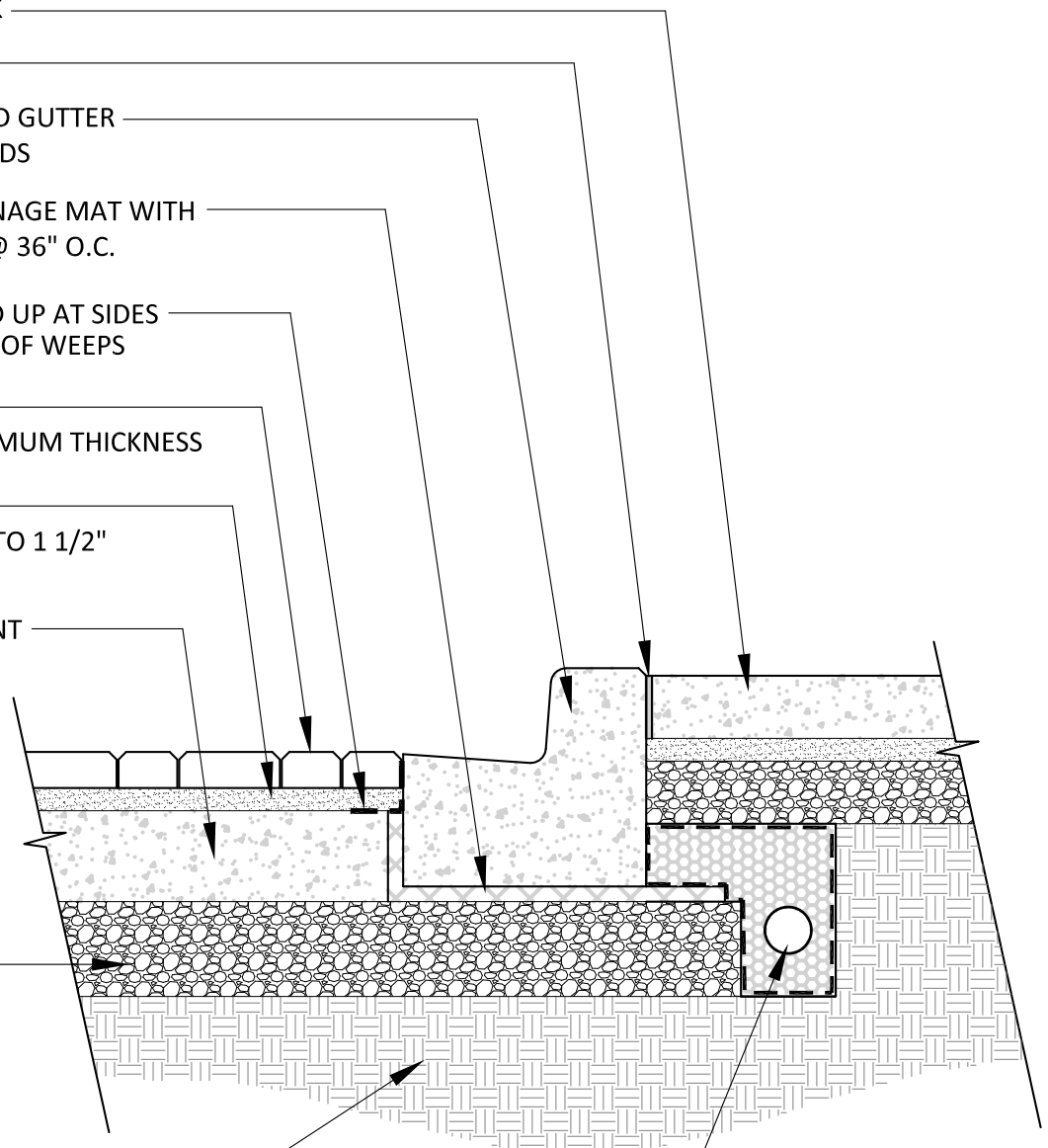
6" WIDE STRIP DRAINAGE MAT WITH  
GEOTEXTILE WRAP @ 36" O.C.

GEOTEXTILE TURNED UP AT SIDES  
AND TO COVER END OF WEEPS

CONCRETE PAVER  
2 3/8" (60MM) MINIMUM THICKNESS

BEDDING SAND  
APPROXIMATELY 1" TO 1 1/2"  
(25-40MM)

CONCRETE PAVEMENT



SUB-BASE

COMPACTED SOIL SUBGRADE

12" WIDE FRENCH DRAIN  
EXTENDS 6" BEYOND SUB-BASE  
FILLED WITH PEA GRAVEL AND  
WRAPPED WITH GEOTEXTILE/  
4" PERFORATED PVC PIPE/ CONNECT  
TO STORM DRAIN OR DAYLIGHT  
AS FIELD CONDITIONS ALLOW

Copyright 2018 Keystone Retaining Wall Systems, LLC  
The suitability and/or manner of use of any  
details contained in this document is the sole  
responsibility of the user.  
Final project specific designs shall be prepared  
by a licensed professional Engineer or Architect.



4444 W 78th Street  
Minneapolis, MN 55435  
952-897-1040

Designed By:  
RKM

Checked By:

Scale:  
NO SCALE

Title: DRAINAGE WEEPS FOR SEPARATE CURB  
AND GUTTER ON PC CONCRETE PAVEMENT  
(WITH SIDEWALK)

Project:  
KEYSTONE HARDSCAPES CONCRETE PAVER

Date:  
03-2019

Revision:

Drawing No:  
1 of 1