



Stonegate

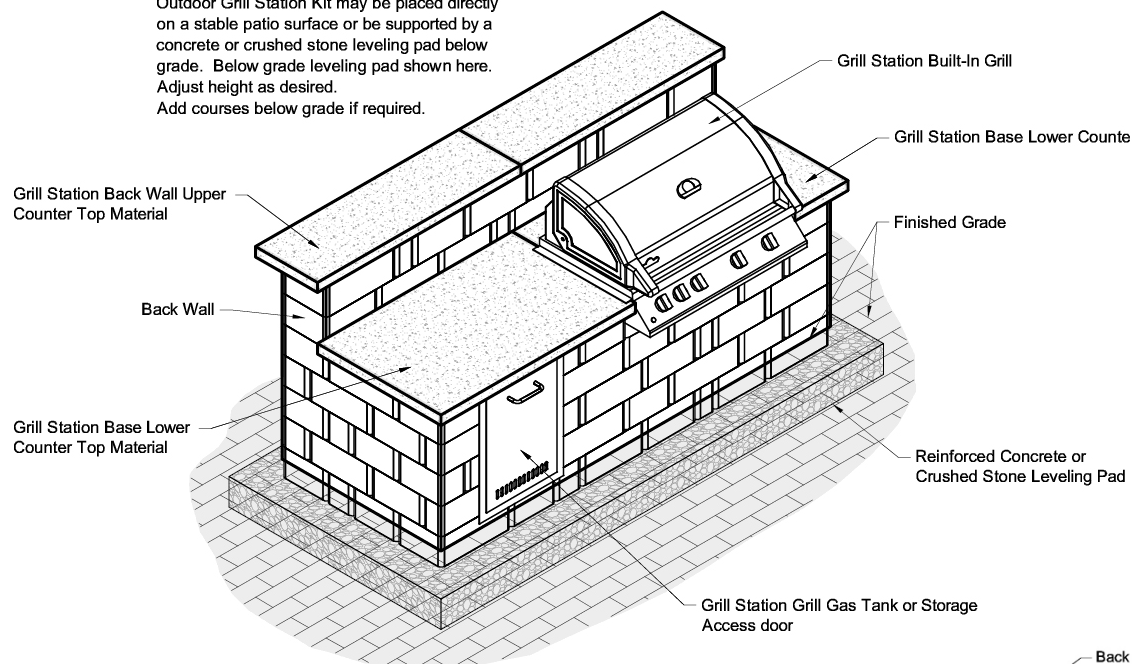
GRILL STATION INSTALLATION INSTRUCTIONS



KEYSTONE BUILDING IDEAS • GRILL STATION

Outdoor Grill Station Kit Placement:

Outdoor Grill Station Kit may be placed directly on a stable patio surface or be supported by a concrete or crushed stone leveling pad below grade. Below grade leveling pad shown here. Adjust height as desired. Add courses below grade if required.



You will need:

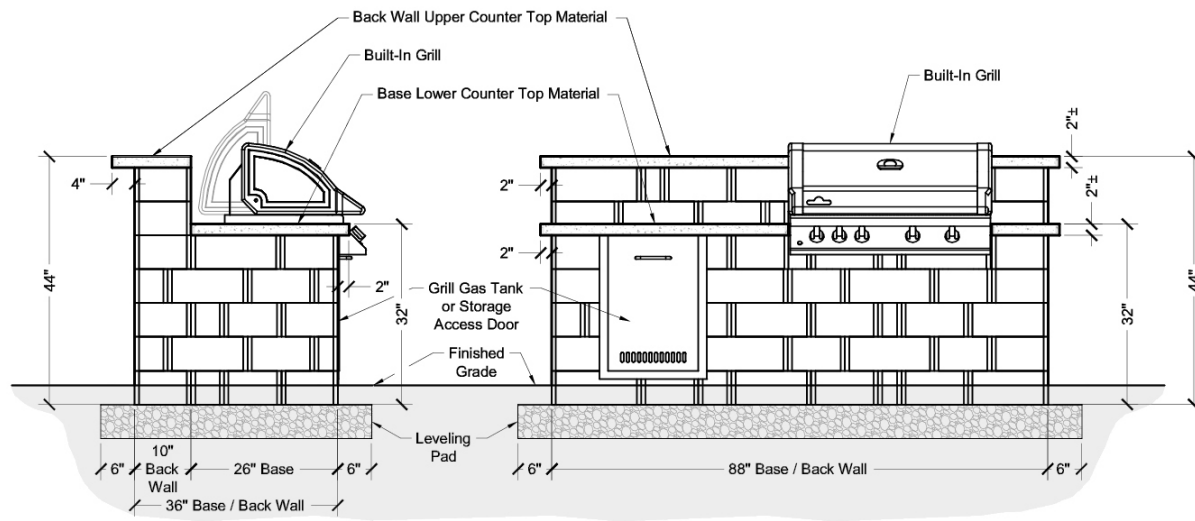
- 34 Large units (6" h x 16 1/4" w x 10" d)
- 48 Medium units (6" h x 12/10" w x 10" d)
- 38 Small units (6" h x 6/4" w x 10" d)
- 2 Countertops (46" w x 14" d)
- 1 Countertop (88" w x 28" d)
- Exterior Grade Concrete Adhesive
- Grill Insert
- Propane access door

Built-in Grill Note:

Approximate size of grill opening is 36" w x 22" d.

Propane Opening Note: Approximate size of propane tank opening is 19" w x 25 1/2" h.

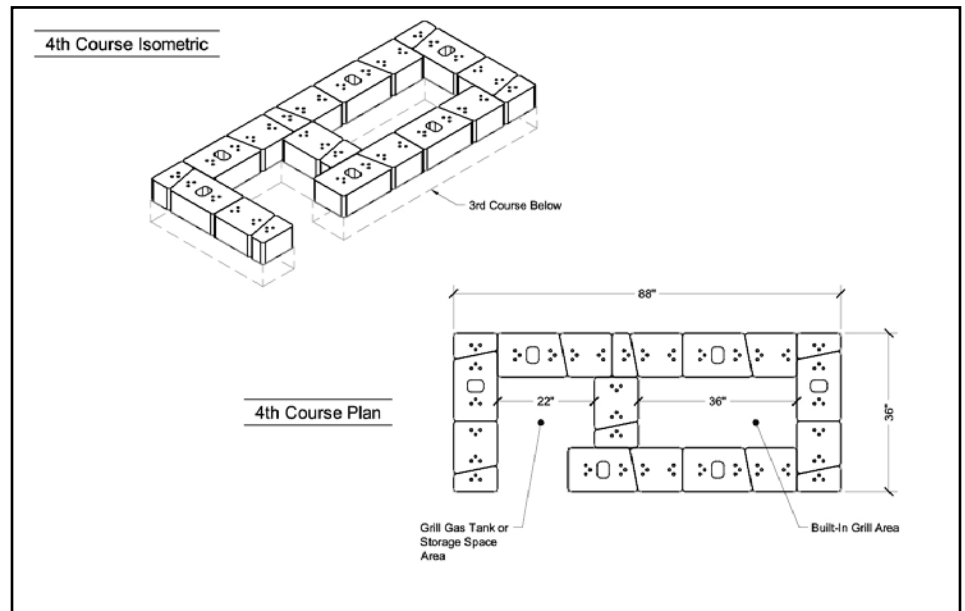
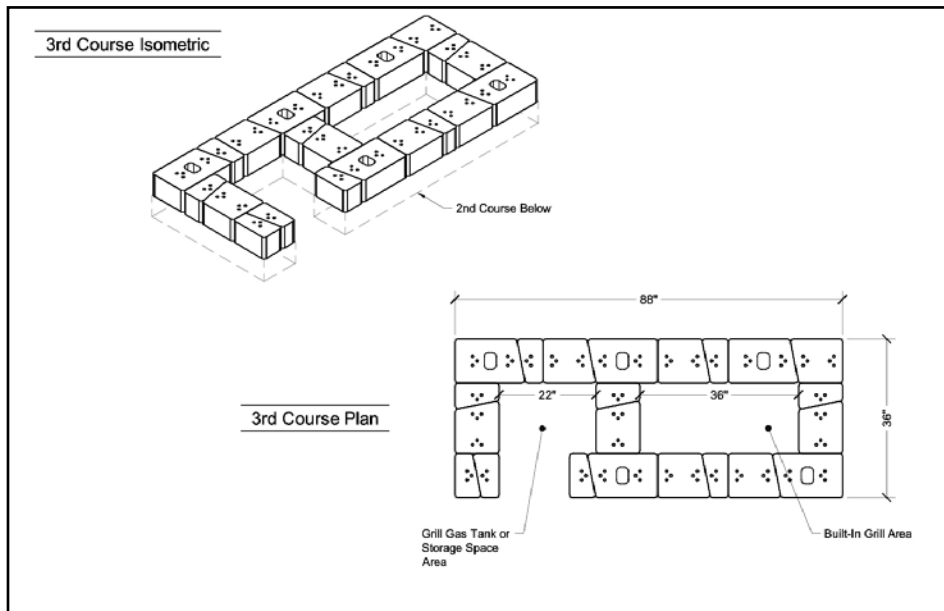
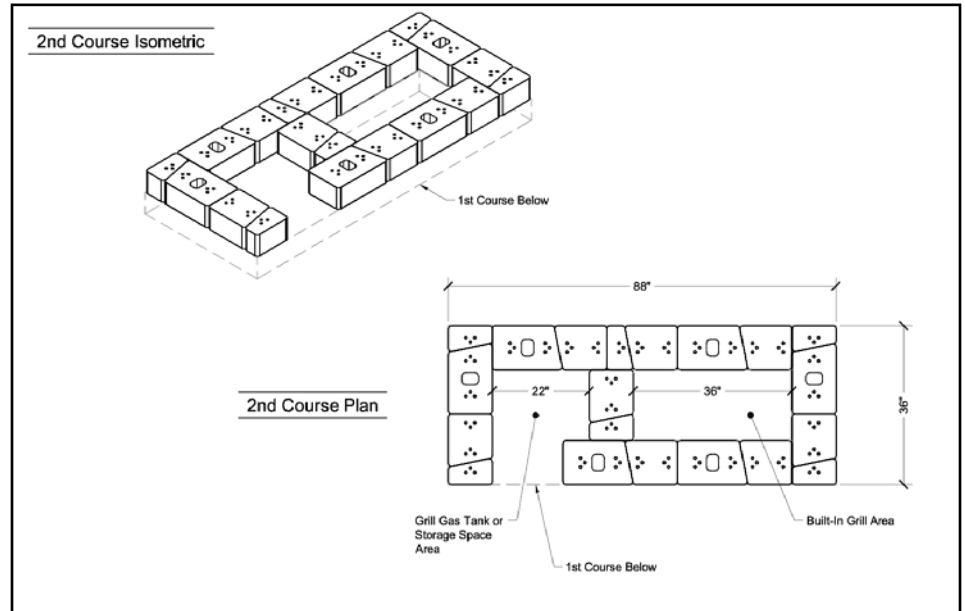
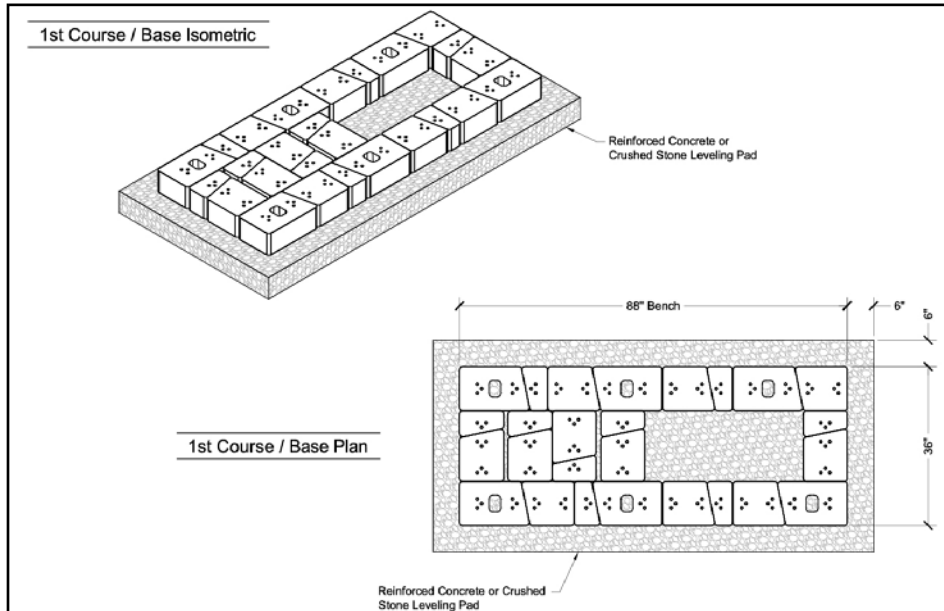
General Note: In consideration of freeze/thaw issues during the cold weather season, it is recommended that this outdoor built-in grill station element be protected from rain, snow and ice as necessary.



Grill Station Side Elevation

Grill Station Front Elevation

COURSE BY COURSE INSTRUCTIONS

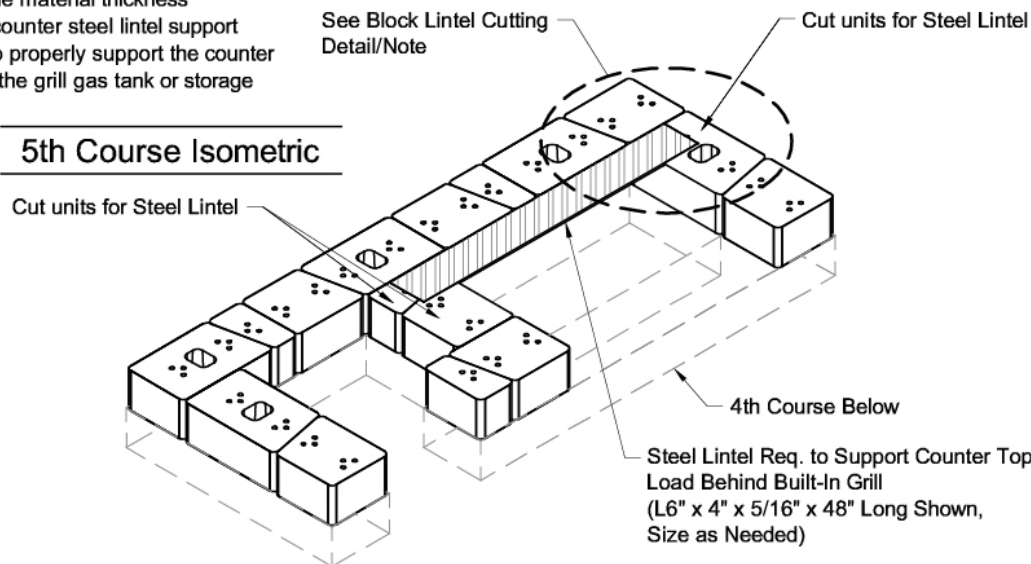


COURSE BY COURSE INSTRUCTIONS

Note:

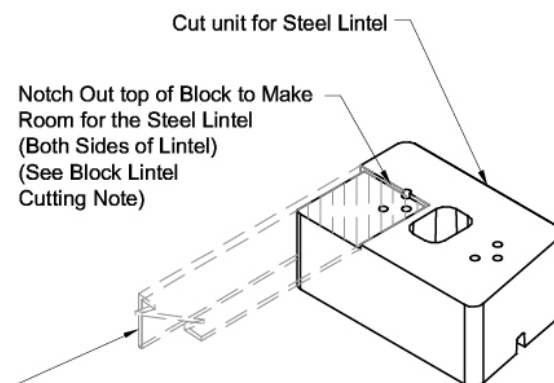
Depending on the type of counter top material used as well as the material thickness additional under counter steel lintel support may be needed to properly support the counter top material over the grill gas tank or storage space area.

5th Course Isometric



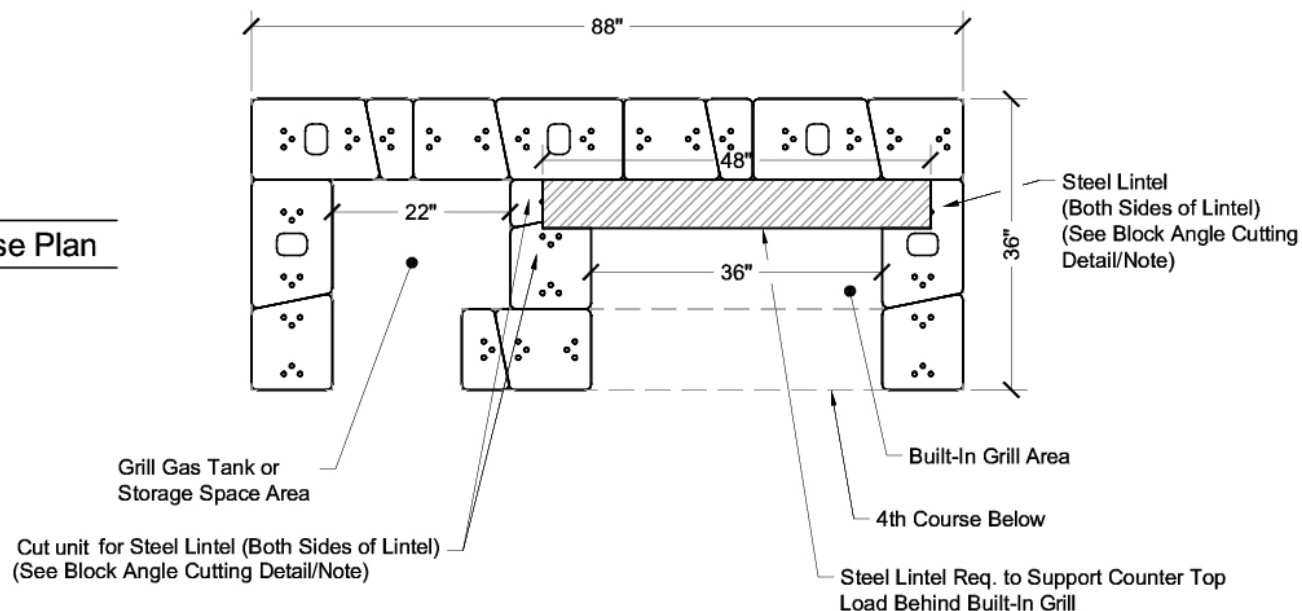
Block Lintel Cutting Note:

Prior to installing steel lintel, using a wheel grinder tool w/masonry disk to notch out the top and or end of blocks to place steel lintel into so lintel is flush with all surfaces of cut block.



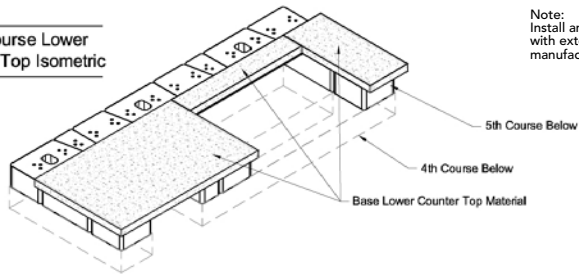
Block Lintel Cutting Detail

5th Course Plan



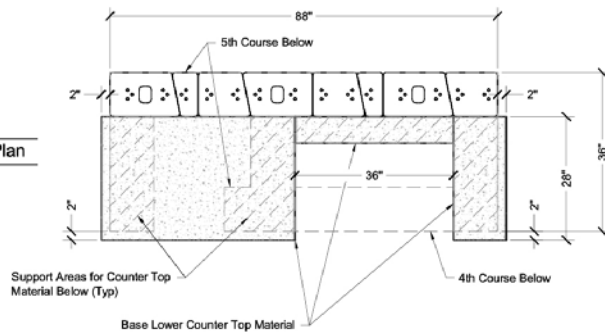
COURSE BY COURSE INSTRUCTIONS

5th Course Lower Counter Top Isometric

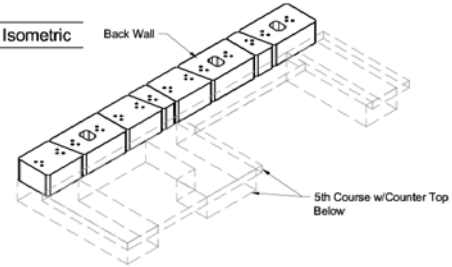


Note:
Install and secure counter top material with exterior grade concrete adhesive as per manufacturers installation instructions.

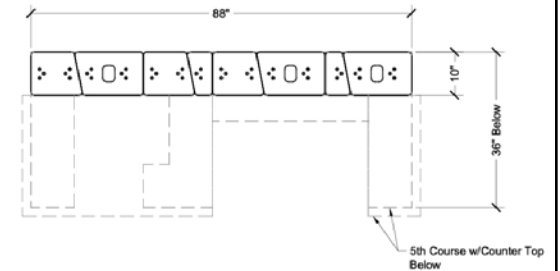
5th Course Lower Counter Top Plan



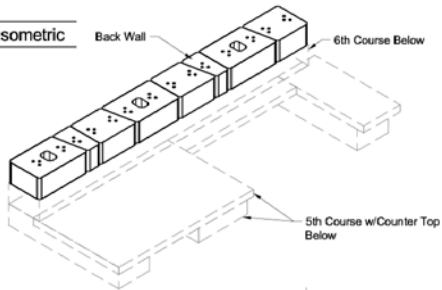
6th Course Isometric



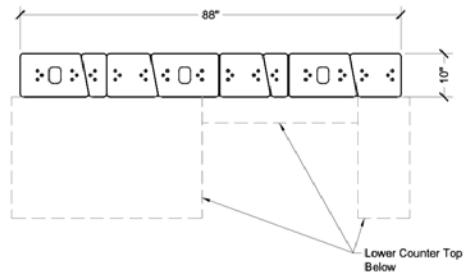
6th Course Plan



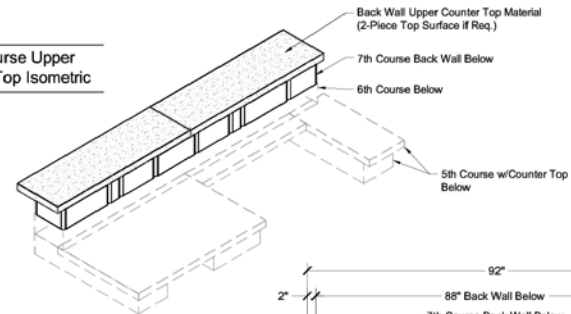
7th Course Isometric



7th Course Plan



7th Course Upper Counter Top Isometric



Note:
Install and secure counter top material with exterior grade concrete adhesive as per manufacturers installation instructions.

7th Course Upper Counter Top Plan

