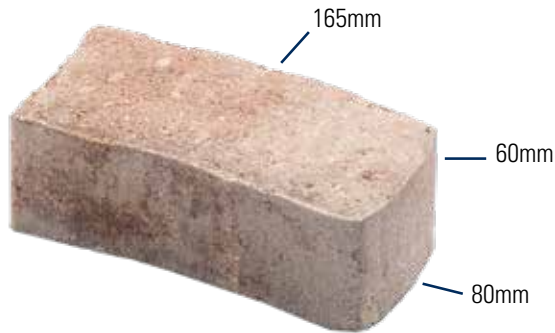


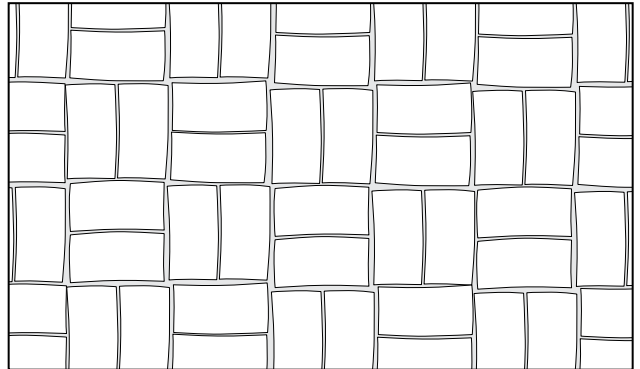
FLAGLER

CURVATURE OF INDIVIDUAL PAVERS APPEAR AS TRUE STONES

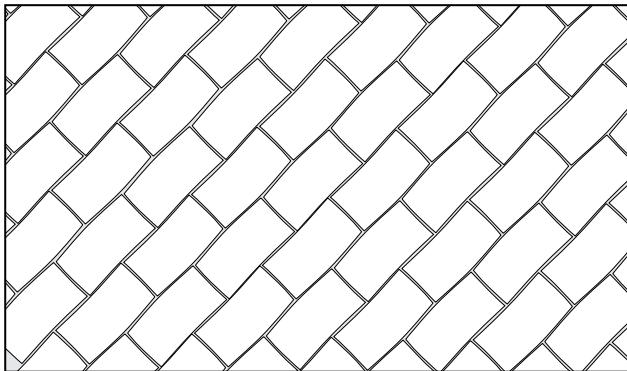


	2³/₈"*	THICKNESS
	3¹/₈" x 6¹/₂" *	DIMENSIONS

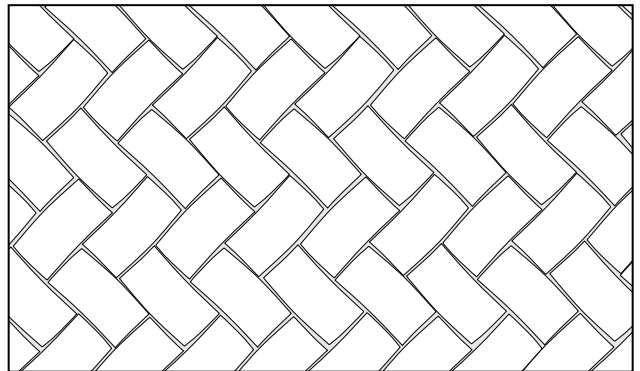
* English measurements are nominal. Exact dimensions are shown metrically as installed measurements.



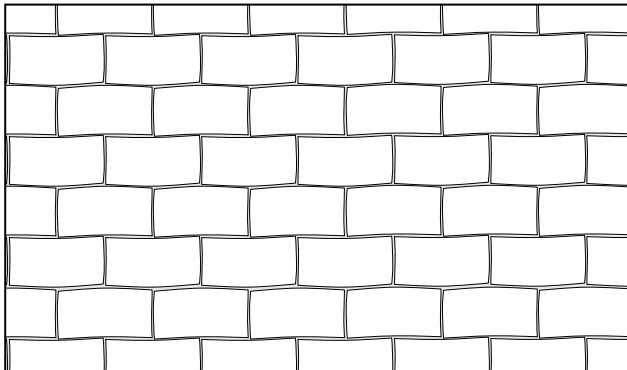
Basketweave



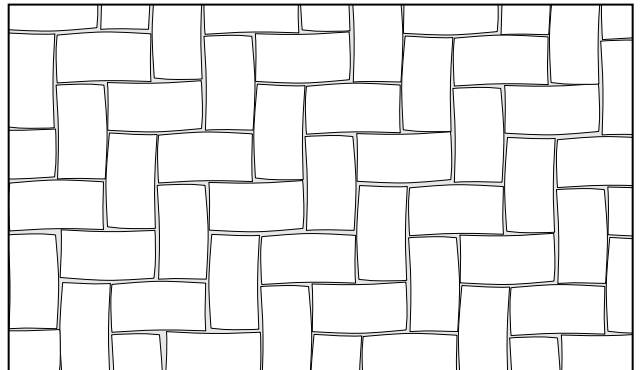
45° Running Bond



45° Herringbone



90° Running Bond



90° Herringbone

SPECS

- Uneven chamfered edges
- Meets ASTM specification C-936
- 7 pieces per square foot
- See product chart for English square footage and other information
- See product color run sheet for available colors

FLAGSTONE  **PAVERS**
 QUALITY & STRENGTH INTERLOCKED

9070 Old Cobb Road
 Brooksville, FL 34601
 Phone: 352-799-7933
orders@flagstonepavers.com
www.flagstonepavers.com